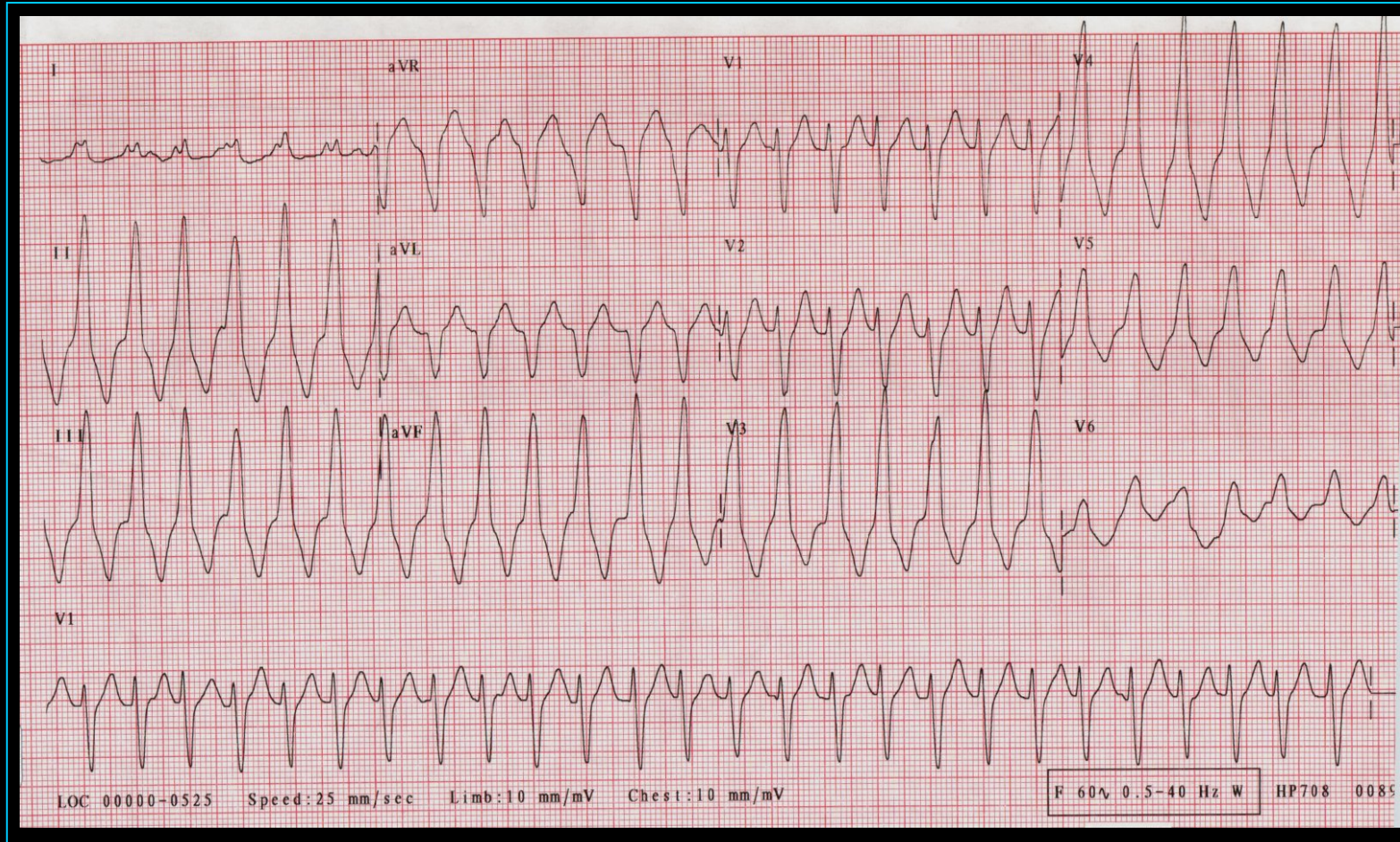


Amiodarone Infusion

**This presentation
shows the steps
involved in the
preparation of an
Amiodarone Infusion**

Amiodarone Infusion



Confirm the persistent of tachyarrhythmia following ROSC.

Amiodarone Infusion



Confirm Amiodarone was used to convert VF/VT

Amiodarone Infusion

RIGHT drug

RIGHT patient

RIGHT dose

RIGHT time

RIGHT route

RIGHT documentation

RIGHT to refuse

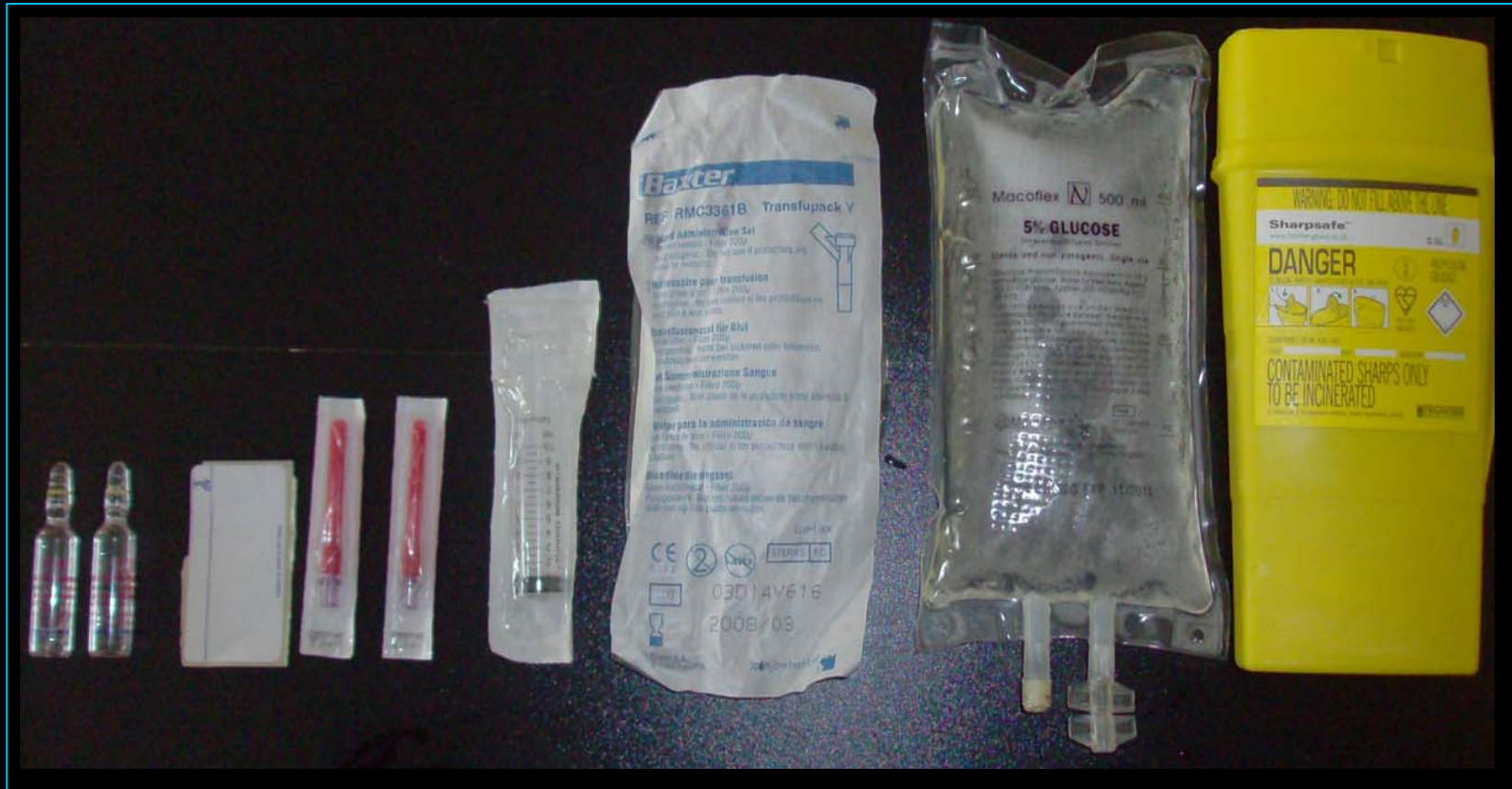
Perform 7R' of drug administration

Amiodarone Infusion



Confirm presentation of Amiodarone
150mg/3ml ampoules or 300mg/10ml mini-jet

Amiodarone Infusion



Equipment needed for 150mg/3ml ampoules

Amiodarone Infusion



Procedure for using 150mg/3ml ampoules

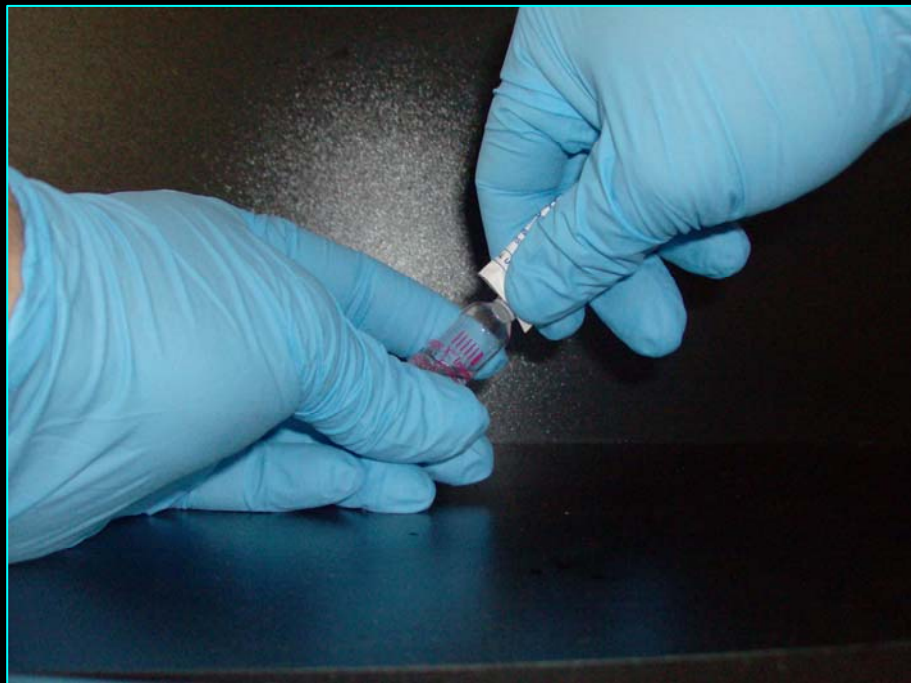
Amiodarone Infusion



Procedure for using 150mg/3ml ampoules

Use a 10ml syringe and withdraw 3mls of 5% Dextrose from injection port of soft bag using a blunt fill filter needle. This helps stop the amiodarone frothing up when drawn into the syringe.

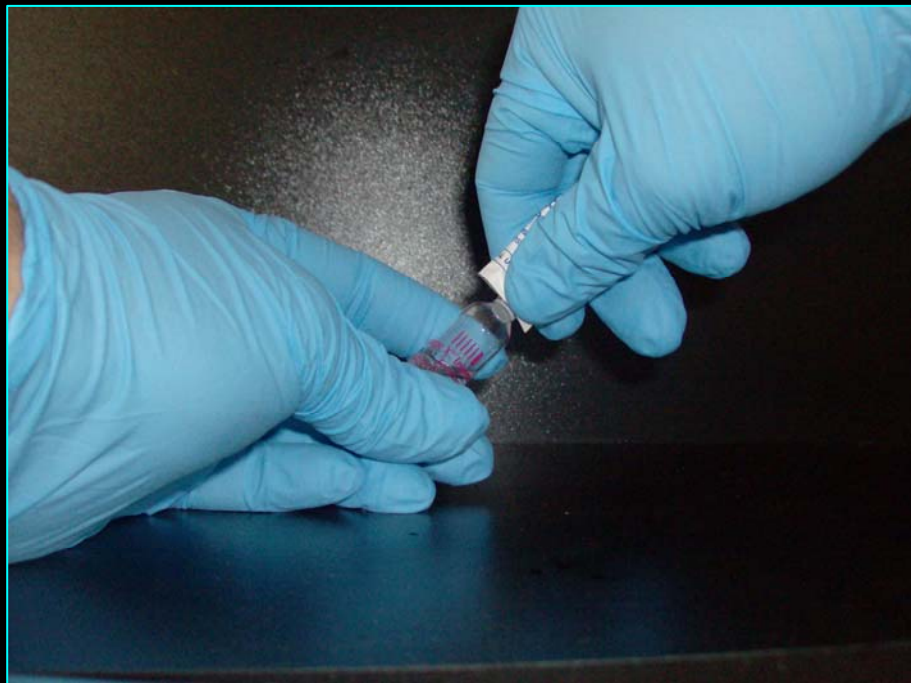
Amiodarone Infusion



Procedure for using 150mg/3ml ampoules

Open first ampoule, using pad to protect your fingers, dispose of broken top into sharps bin. Gently withdraw 150 mg / 3mls into your 10 ml syringe. Dispose of empty ampoule into sharps bin.

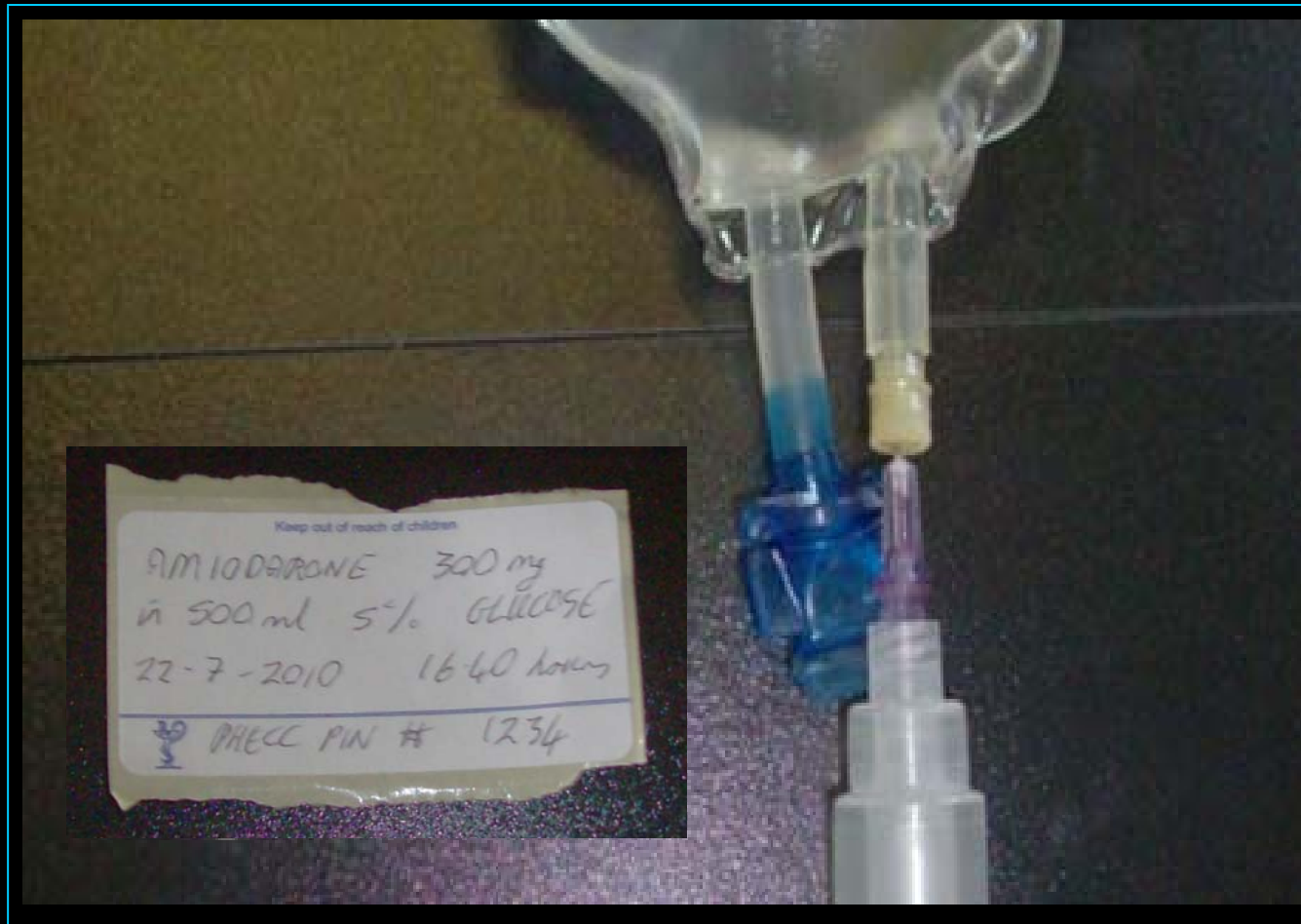
Amiodarone Infusion



Procedure for using 150mg/3ml ampoules

Open second ampoule, using pad to protect your fingers, dispose of broken top into sharps bin. Gently withdraw the second 150 mg / 3mls into your 10 ml syringe. Dispose of empty ampoule into sharps bin.

Amiodarone Infusion



Procedure for using 150mg/3ml ampoules

Change to a new blunt fill filter needle and inject the contents of the syringe into the injection port of the 500 ml bag of 5% dextrose.

Dispose of needle and syringe into sharps bin.

Amiodarone Infusion



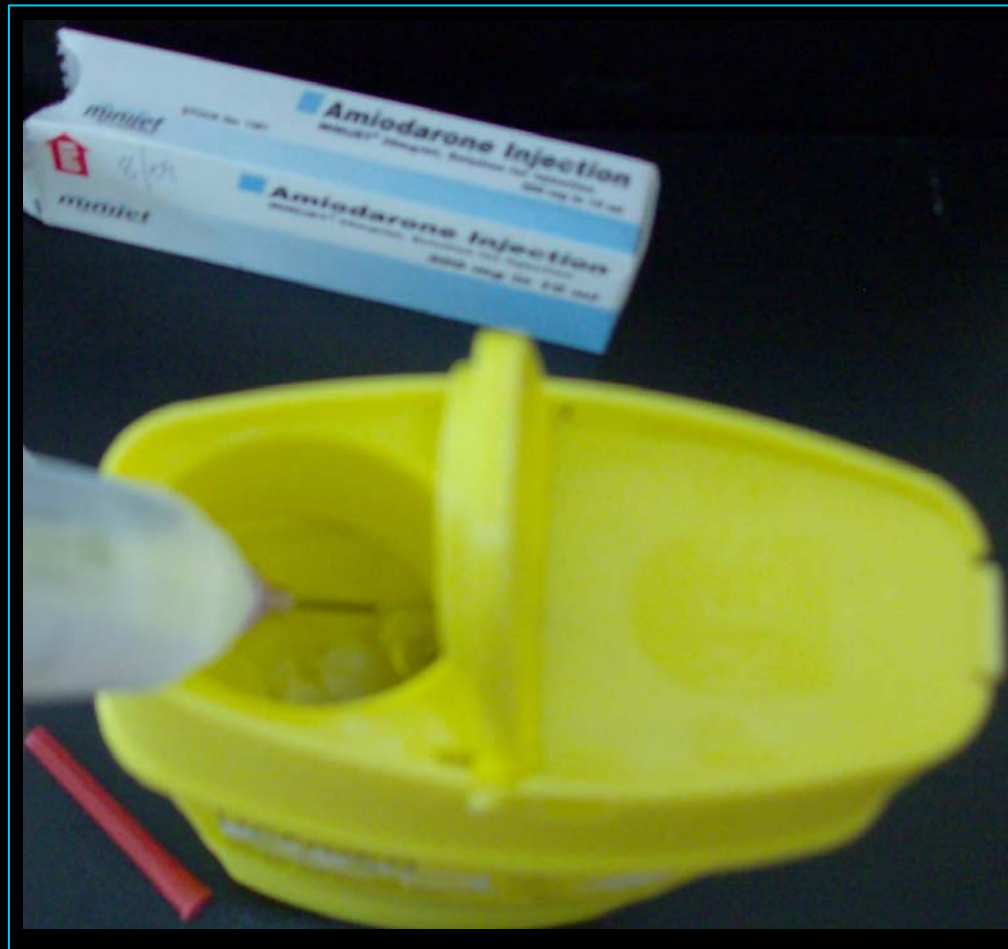
Procedure for using 300mg/10ml mini-jet
Attach a blunt fill filter needle to the Amiodarone mini-jet.

Amiodarone Infusion



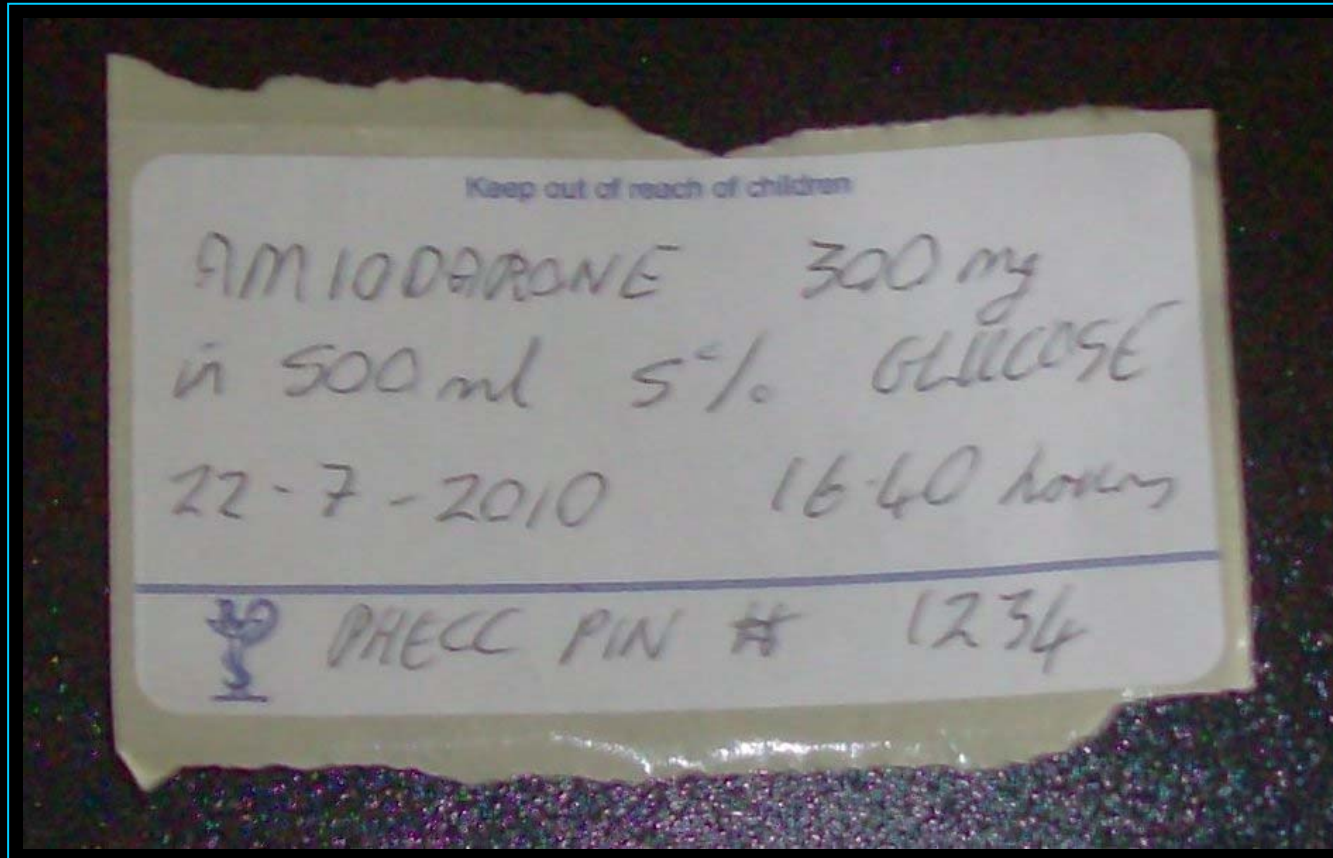
Procedure for using 300mg/10ml mini-jet
Inject the contents of the mini jet into the injection port of the infusion bag.

Amiodarone Infusion



Procedure for using 300mg/10ml mini-jet
Dispose of needle and mini jet into sharps bin.

Amiodarone Infusion



Invert bag 3 to 4 times to mix medication. Label Infusion with Drug name, Drug dosage, Volume of Dextrose, Date and time and your PHECC pin number.

Amiodarone Infusion



Check drip set (20 gtt/ml), close roller clamp, 1/2 fill drip chamber, flush line without wasting medication.

Amiodarone Infusion

1 mg of Amiodarone per minute form infusion bag - 300 mg in 500 ml of 5% Dextrose.

$$\text{Volume required (ml)} = \frac{\text{Dose required (mg)}}{\text{Dose in Ampoule (mg)}} \times \text{Volume in Ampoule (ml)}$$

$$\text{Volume required (ml)} = \frac{1 \text{ mg}}{300 \text{ mg}} \times 500 \text{ ml}$$

$$\text{Volume required (ml)} = 1.7 \text{ ml}$$

$$\text{Drip rate} = \frac{\text{volume}}{\text{Time}} \times \text{drip set}$$

$$\text{Drip rate} = \frac{1.7 \text{ ml}}{1 \text{ minute}} \times \frac{20 \text{ gtts}}{1 \text{ ml}}$$

$$\text{Drip rate} = 34 \text{ gtts / minute}$$

$$\text{Drip rate} = 3 \text{ gtts / 5 seconds}$$

(Method 1 – Calculate volume for 1 mg. Then use this volume to calculate a drip rate)

Calculate Drip Rate

Approximately 34 Drops per minute if using a 20gtt/ml giving set. (1.7ml/min)

Amiodarone Infusion

1 mg of Amiodarone per minute form infusion bag - 300 mg in 500 ml of 5% Dextrose.

$$\text{Drip rate} = \frac{\text{volume}}{\text{Time}} \times \text{drip set}$$

$$\text{Drip rate} = \frac{500 \text{ ml}}{300 \text{ minutes}} \times \frac{20 \text{ gtts}}{1 \text{ ml}} \quad (300 \text{ mg at } 1 \text{ mg / minute} = 300 \text{ minutes})$$

$$\begin{aligned} \text{Dosage required} &= 34 \text{ gtts / minute} \\ &= 3 \text{ gtts / 5 seconds} \end{aligned}$$

(Method 2 – 300 mg at 1 mg / minute = 300 minutes. Use this time to calculate a drip rate)

Calculate Drip Rate

Approximately 34 Drops per minute if using a 20gtt/ml giving set. (1.7ml/min)

Amiodarone Infusion



Disconnect any running line from IV/IO port, connect Amiodarone infusion set.
Set drip rate at 34 gtts / minute (3 gtts / 5 seconds).
**Do not administer any other drugs through that IV line
while amiodarone infusion is running.**

Amiodarone Infusion

MEDICAL TREATMENT INFORMATION			
TIME (24H)		MEDICATION TREATMENT	
12	30	Amiodarone infusion @ 3 gtts / 5 seconds	
DOSE	ROUTE	CODE (SELECT)	PN
1mg/min	IV	AM	1234

Record amiodarone infusion administration on PCR. Monitor the patient.

Amiodarone Infusion

1. Confirm the persistent of tachyarrhythmia following ROSC.
2. Confirm Amiodarone was used to convert VF/VT.
3. Perform 7R' of drug administration.
4. Confirm presentation of Amiodarone (150mg/3ml ampoules or 300mg/10ml mini-jet).
5. Procedure for using 150mg/3ml ampoule.
 - Use a 10ml syringe and withdraw 3mls of Dextrose from injection port of soft bag using a blunt fill needle. This helps stop the amiodarone frothing up when drawn into the syringe.
 - Open first ampoule, using pad to protect your fingers, dispose of broken top into sharps bin. Gently withdraw 150 mg / 3mls into your 10 ml syringe. Dispose of empty ampoule into sharps bin. Repeat procedure for second ampoule.
 - Change to a new blunt fill needle and inject the contents of the syringe into the injection port of the 500 ml bag of 5% dextrose. Dispose of needle and syringe into sharps bin.
6. Procedure for using 300mg/10ml mini-jet.
 - Attach a blunt fill needle to the Amiodarone mini-jet.
 - Inject the contents of the mini jet into the injection port of the infusion bag.
 - Dispose of needle and mini jet into sharps bin.
7. Invert bag 3 to 4 times to mix medication. Label Infusion with Drug name, Drug dosage, Volume of Dextrose, Date and time and your PHECC pin number.
8. Check drip set (20 gtts/ml), close roller clamp, 1/2 fill drip chamber, flush line don't waste fluid.
9. Calculate Drip Rate – 34 drops per minute if using a 20gtt/ml giving set. (1.7ml/min).
10. Disconnect any running line from IV/IO port, connect Amiodarone infusion set.
11. **Do not administer any other drugs through that IV line with amiodarone infusion.**
12. Record amiodarone infusion administration on PCR.
13. Monitor the patient.